



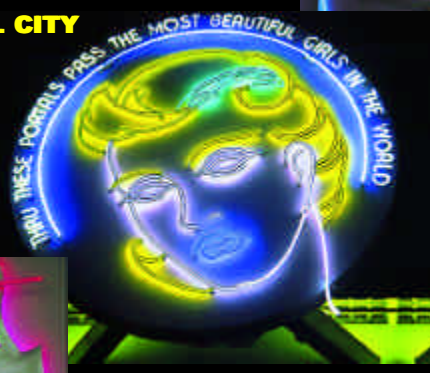
SHERMAN OAKS

Hand to Sky, 1996
Aluminum, copper, brass, neon. 14 x 6 x 2 ft.
Comm: Hannah Theille and Kenna Love, Sherman Oaks

Jonathan and Bill
Aluminum, brass, neon. 30 x 57 x 6 in.
Coll: The Gay and Lesbian Center, 1625 Schrader Blvd., Hollywood

UNIVERSAL CITY

Earl Carroll Theater, 1993
Re-created from 1939 photo. Painted metal, neon. 12 x 12 x 1 ft.
Coll: Museum of Neon Art, Los Angeles. On display at CityWalk, Universal City



MONA Supergraphic, 1993
Neon on facade of building. 30 x 20 x .5 ft.
Comm: MCA Development for CityWalk, Universal City

MT. WASHINGTON

Requiem, 1988
Aluminum, copper, brass, neon. 7 x 5 x 1.5 ft.
Coll: Mary Carter, Mt. Washington

Paradise, 1996
Aluminum, neon, found objects. 44 x 42 x 7 in.
Coll: Miki Jackson and Kate Uccel, Highland Park

SAN FERNANDO RD.



The Ghost of Rock 'n' Roll, 1987
Aluminum, copper, brass, guitar, neon. 92 x 68 x 30 in.
at Lakich Studio

Reel Art (Take 3), 1997
Aluminum, brass, neon, found objects. 34 x 30 x 6 in.
Coll: Michael and Willy Miller, Woodland Hills

WOODLAND HILLS



SUNSET BLVD.

WEST HOLLYWOOD



HOLLYWOOD

SANTA MONICA BLVD.



Reel Love, 1995
Aluminum, neon, found objects. 50 x 36 x 10 in.
Coll: Chris Arnold, CBO, 6824 Melrose Ave., Hollywood

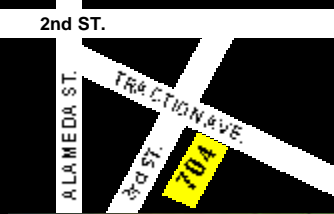
SUNSET BLVD.



3rd ST.

When the Eagle Flies, 1990
Aluminum, copper, brass, neon. 192 x 96 x 18 in.
Coll: The Washington Bldg., 311 Spring Street, Los Angeles

DOWNTOWN



2nd ST.

Rapture, 2000
Aluminum, brass, neon, found object. 86 x 42 x 10 in.
at Lakich Studio. 704 Traction Ave.

ALAMEDA ST.
3rd ST.
TRACTION AVE.
704

BRENTWOOD

Mumbo, 1989
Aluminum, glass lens, typewriter, neon. 48 x 41 x 11 in.
Coll: Janine Smith, Brentwood



WEST LOS ANGELES



Sign for WeHo Lounge, 1997
Aluminum, copper, brass, neon. 6 x 4 x 2 ft.
8861 Santa Monica Blvd. West Hollywood

Elvis II, 1988
Aluminum, neon. 108 x 54 x 12 in.
Exhibited: Petersen Automotive Museum. 6060 Wilshire Blvd. thru Jan. 21, 2002

4th ST.

L.A. Angel, 1992
Aluminum, brass, glass, 1957 Plymouth Fury. 75 x 12 x 2 ft.
Comm: California Plaza., Olive St. north of 4th St.

Ace of Hearts, 1995
Aluminum, copper, neon. 48 x 41 x 8 in.
Coll: Coast Investment. 725 Arizona Ave., Santa Monica

SANTA MONICA

WILSHIRE BLVD.

Elektra (from the Goddess Icons series), 1996
Aluminum, neon. 34 x 26 x 6 in.
Coll: Frances Hanckel and Anora Tracy, San Pedro

California Dreamin', 2000
Aluminum, copper, brass, neon. 28 x 10 x 2 ft.
Comm: L.A. Auto Show. 11835 W. Olympic Blvd., Suite 625 West Los Angeles



OLYMPIC BLVD.

Sign for Museum of Neon Art, 1997
Aluminum, neon. 20 x 2 x 1 ft.
Comm: CRA-LA. for MONA. 501 West Olympic Blvd. at Hope St. in Downtown

Tell Me About Yourself, 1995
Aluminum, copper, brass, neon. 12 x 12 x 7 ft.
Comm: Evelyn and Frank Freed, Santa Ana

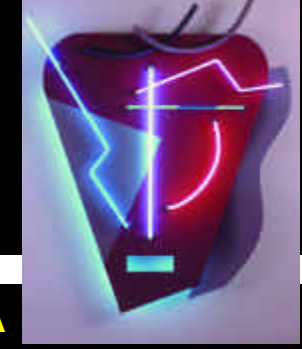
SANTA ANA

Mona, 1981
Photostat, neon. 55 x 39 x 7 in.
Museum of Neon Art. 501 W. Olympic Blvd.

HANCOCK PARK

Winged Icon with Pyramid, 1990
Aluminum, neon. 108 x 54 x 12 in.
Comm: Elaine Johnson, Hancock Park

Helios, 1989
Aluminum, neon. 72 x 50 x 30 in.
at Lakich Studio



BREA

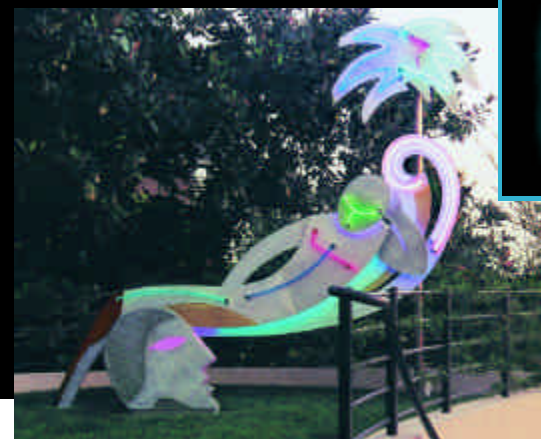
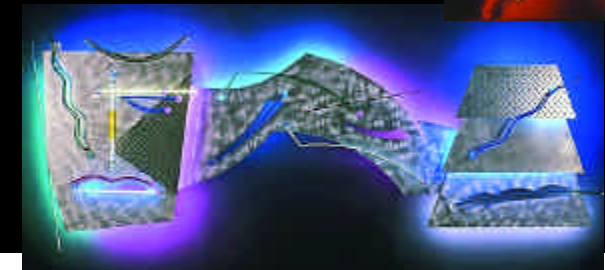
A GUIDE TO SELECTED
LILI LAKICH
Neon Sculpture
IN SOUTHERN CALIFORNIA

LAKICHSTUDIO
704 Traction Avenue
Los Angeles, CA 90013-1814
Tel: (213) 620-8641
Fax: (213) 620-8904
e-mail: lili@lakich.com

SAN PEDRO

And Justice for All, 1990
Aluminum, copper, brass, glass, neon. 12 x 10 x 1.5 ft.
Originally commissioned for Columbia Square, San Diego. Now in rear lobby at Hamilton Place, 20101 Hamilton Ave., Torrance

TORRANCE



SANTA FE AVE.